

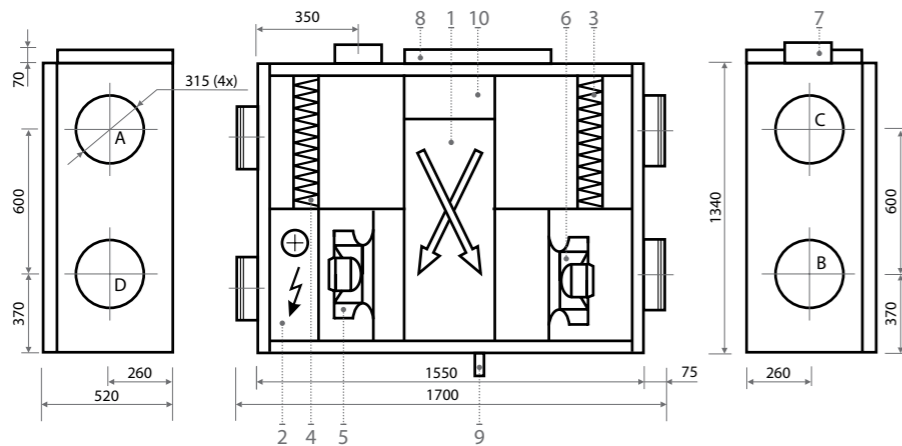
KOMPAKT RECU 1600-2000



The photo is intended for informational purposes only, exact details may vary.

Panel thickness	45 mm
Unit weight	190 kg
Nominal air flow	1600-2000 m³/h
Supply voltage	3~ 400 V
Maximal operating current	RECU 1600-14,1 A RECU 2000-16,3 A
Paint color	RAL 7035
Control system	KOMFOVENT C3

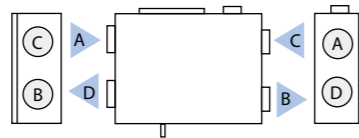
RECU



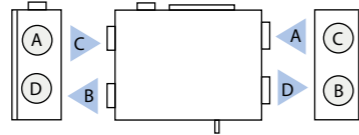
Design

1. Plate heat exchanger
2. Electric air heater
3. Supply air filter
4. Exhaust air filter
5. Supply fan
6. Exhaust fan
7. Main switch
8. Automatic control devices
9. Condensate drain (the water trap must be installed D=28 mm)
10. By-pass damper

Shown as right



Shown as left



A Outdoor intake B Supply air C Extract indoor D Exhaust air

Air Filters. Supply / Exhaust

Filter class	EN779:2011 M5/F7*	
Type	Panel	
Dimensions b x h x l (mm)	600x420x96	
* Option		

Fans Motors EC

	RECU 1600	RECU 2000
Input power (W)	435	660
Rotation speed (rpm)	2540	2900
Protection level, IEC 34-5	IP 54	

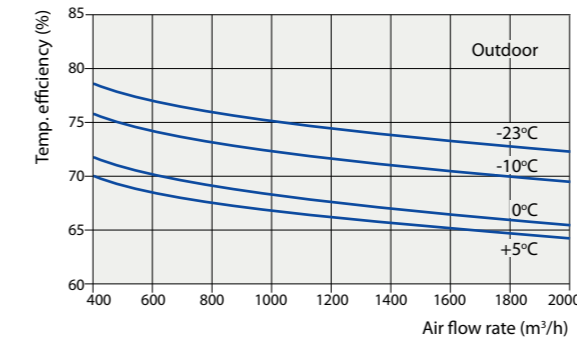
Electric Air Heater

	RECU 1600	RECU 2000
Capacity (kW)	7,5	9
Air temperature, Δt (°C)	13,8	13,3

Temperature efficiency wet

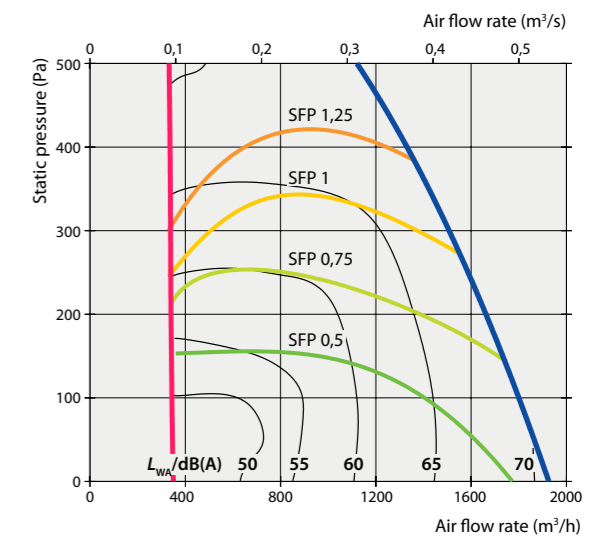
	Supply		Exhaust	
Intake temperature (°C)	-10	-5	0	20
Supply temperature (°C)	11,4	14	14,6	

Temperature efficiency wet

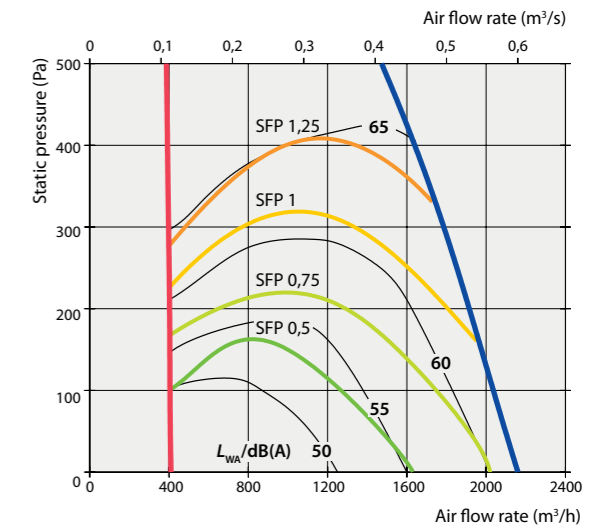


Application: 21°C, RH 45% indoor

Performance RECUs 1600**



Performance RECUs 2000**



P[kW]= SFP[kW/(m³/s)] · V[m³/s]; SFP is shown for one fan. Performance data: filter M5. Correction factor for F7 class filter approximately - 70 Pa.

** Units are still under development and performance data is being revised

PRELIMINARY
DATA

Acoustic Data

	63	125	250	500	1k	2k	4k	8k dB(A)
RECU-1600PE-EC								
Supply Inlet	-11	-7	-7	-8	-11	-18	-23	-6,7
Supply Outlet	-7	-2	-1	-1	-5	-11	-14	-0,1
Exhaust Inlet	-11	-7	-7	-8	-11	-18	-23	-6,7
Exhaust Outlet	-7	-2	-1	-1	-5	-10	-14	0,0
Surrounding (3 pl., 3 m)	-24	-21	-21	-28	-31	-36	-41	-24,8

	63	125	250	500	1k	2k	4k	8k dB(A)
RECU-2000PE-EC								
Supply Inlet	-12	-8	-8	-9	-13	-21	-27	-8,1
Supply Outlet	-8	-2	-1	-1	-5	-12	-16	-0,1
Exhaust Inlet	-12	-8	-8	-9	-13	-21	-27	-8,1
Exhaust Outlet	-8	-2	-1	-1	-5	-12	-16	0,0
Surrounding (3 pl., 3 m)	-26	-22	-23	-30	-34	-41	-47	-27,4